

## dynamicSTEP

### Ergonomic work place mat

The **dynamicSTEP** floor mat system made of permanently elastic PUR integral foam reduces the pressure exerted by hard flooring and provides safety in the workplace, during sport and leisure time as a non-slip floor covering.

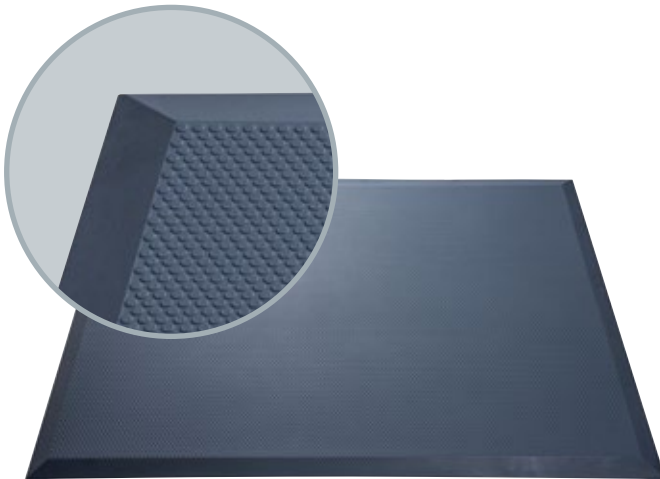
The floor covering has an insulating, shock-absorbing and sound-insulating effect. The highly resistant material also allows use in production and warehouse areas where people stand or walk.

properties	value	comment
material	polyurethane	Dipointegral EL
surface/design	flat pastille	bevelled edging along the entire perimeter
colour	anthracite	RAL 7016 <sup>(1)</sup>
length	905 mm ± 1.5 %	
width	650 mm ± 1.5 %	
thickness	13 mm ± 1.5 %	
mat weight	2.79 kg <sup>(2)</sup>	
surface weight	4.74 kg/m <sup>2</sup> <sup>(2)</sup>	
hardness	28 ± 5 Shore A	
packaging unit	80 pieces	
temperature resistance	-40 to +80 °C	
chemical resistance	good	Please ask for our detailed resistance list
UV resistance	discolouration may occur but won't influence the quality and performance of the material	
trafficability	not suitable for vehicle traffic	
fire behaviour	B2	DIN 4102-2, normal flammability

<sup>(1)</sup> Colour of the material may slightly differ from the colour specification

<sup>(2)</sup> Due to usual manufacturing tolerances there may be minor deviations from the values given.

All information and data is based on our current knowledge. The data are subject to typical manufacturing tolerances and are not guaranteed. We reserve the right to amend the data.



## dynamicSTEP

### Ergonomic work place mat

The **dynamicSTEP** floor mat system made of permanently elastic PUR integral foam reduces the pressure exerted by hard flooring and provides safety in the workplace, during sport and leisure time as a non-slip floor covering.

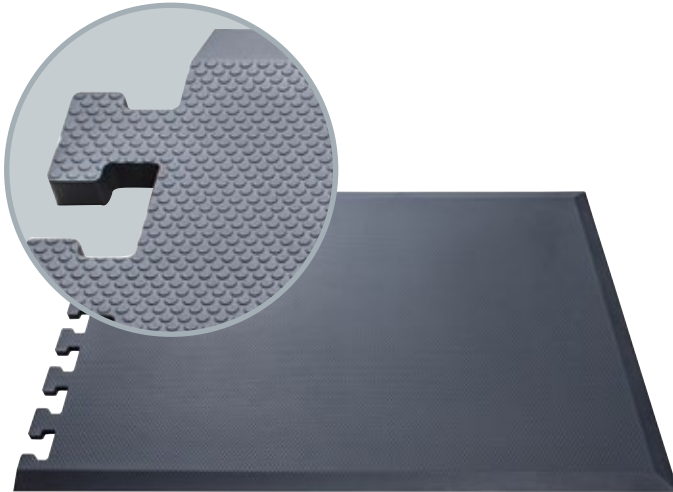
The floor covering has an insulating, shock-absorbing and sound-insulating effect. The highly resistant material also allows use in production and warehouse areas where people stand or walk.

properties	value	comment
material	polyurethane	Dipointegral EL
surface/design	flat pastille	bevelled edging along the entire perimeter
colour	anthracite	RAL 7016 <sup>(1)</sup>
length	1210 mm ± 1.5 %	
width	650 mm ± 1.5 %	
thickness	13 mm ± 1.5 %	
mat weight	3.73 kg <sup>(2)</sup>	
surface weight	4.74 kg/m <sup>2</sup> <sup>(2)</sup>	
hardness	28 ± 5 Shore A	
packaging unit	80 pieces	
temperature resistance	-40 to +80 °C	
chemical resistance	good	Please ask for our detailed resistance list
UV resistance	discolouration may occur but won't influence the quality and performance of the material	
trafficability	not suitable for vehicle traffic	
fire behaviour	B2	DIN 4102-2, normal flammability

<sup>(1)</sup> Colour of the material may slightly differ from the colour specification

<sup>(2)</sup> Due to usual manufacturing tolerances there may be minor deviations from the values given.

All information and data is based on our current knowledge. The data are subject to typical manufacturing tolerances and are not guaranteed. We reserve the right to amend the data.



## dynamicSTEP

### Ergonomic work place mat

The **dynamicSTEP** floor mat system made of permanently elastic PUR integral foam reduces the pressure exerted by hard flooring and provides safety in the workplace, during sport and leisure time as a non-slip floor covering.

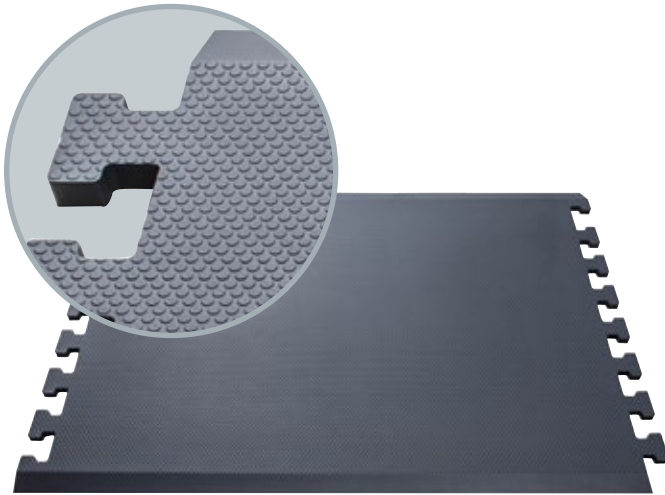
The floor covering has an insulating, shock-absorbing and sound-insulating effect. The highly resistant material also allows use in production and warehouse areas where people stand or walk.

properties	value	comment
material	polyurethane	Dipointegral EL
surface/design	flat pastille	single-sided toothing, bevelled at un-toothed edges
colour	anthracite	RAL 7016 <sup>(1)</sup>
length	905 mm ± 1.5 %	
width	650 mm ± 1.5 %	
thickness	13 mm ± 1.5 %	
mat weight	2.79 kg <sup>(2)</sup>	
surface weight	4.74 kg/m <sup>2</sup> <sup>(2)</sup>	
hardness	28 ± 5 Shore A	
packaging unit	80 pieces	
temperature resistance	-40 to +80 °C	
chemical resistance	good	Please ask for our detailed resistance list
UV resistance	discolouration may occur but won't influence the quality and performance of the material	
trafficability	not suitable for vehicle traffic	
fire behaviour	B2	DIN 4102-2, normal flammability

<sup>(1)</sup> Colour of the material may slightly differ from the colour specification

<sup>(2)</sup> Due to usual manufacturing tolerances there may be minor deviations from the values given.

All information and data is based on our current knowledge. The data are subject to typical manufacturing tolerances and are not guaranteed. We reserve the right to amend the data.



## dynamicSTEP

### Ergonomic work place mat

The **dynamicSTEP** floor mat system made of permanently elastic PUR integral foam reduces the pressure exerted by hard flooring and provides safety in the workplace, during sport and leisure time as a non-slip floor covering.

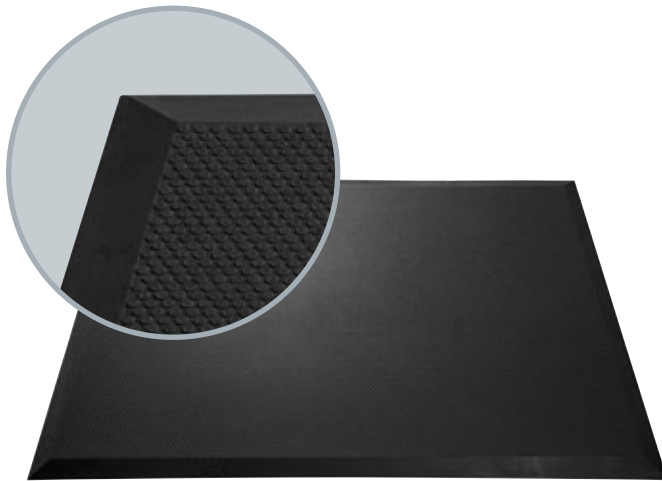
The floor covering has an insulating, shock-absorbing and sound-insulating effect. The highly resistant material also allows use in production and warehouse areas where people stand or walk.

properties	value	comment
material	polyurethane	Dipointegral EL
surface/design	flat pastille	double-sided tothing, bevelled at un-toothed edges
colour	anthracite	RAL 7016 <sup>(1)</sup>
length	905 mm ± 1.5 %	
width	650 mm ± 1.5 %	
thickness	13 mm ± 1.5 %	
mat weight	2.79 kg <sup>(2)</sup>	
surface weight	4.74 kg/m <sup>2</sup> <sup>(2)</sup>	
hardness	28 ± 5 Shore A	
packaging unit	80 pieces	
temperature resistance	-40 to +80 °C	
chemical resistance	good	Please ask for our detailed resistance list
UV resistance	discolouration may occur but won't influence the quality and performance of the material	
trafficability	not suitable for vehicle traffic	
fire behaviour	B2	DIN 4102-2, normal flammability

<sup>(1)</sup> Colour of the material may slightly differ from the colour specification

<sup>(2)</sup> Due to usual manufacturing tolerances there may be minor deviations from the values given.

All information and data is based on our current knowledge. The data are subject to typical manufacturing tolerances and are not guaranteed. We reserve the right to amend the data.



## dynamicSTEP ESD

Ergonomic workplace mat  
for ESD areas

The **dynamicSTEP** floor mat system made of permanently elastic PUR integral foam reduces the pressure exerted by hard flooring and provides safety in the workplace, during sport and leisure time as a non-slip floor covering.

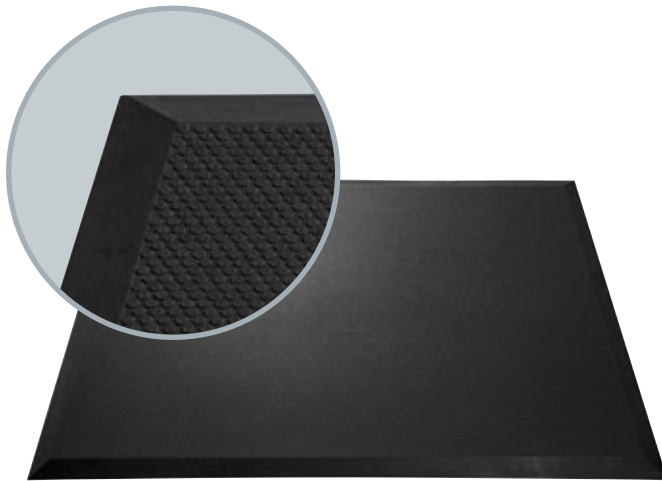
The floor covering has an insulating, shock-absorbing and sound-insulating effect. The highly resistant material also allows use in production and warehouse areas where people stand or walk.

properties	value	comment
material	polyurethane	Dipointegral EL
surface/design	flat pastille	bevelled edging along the entire perimeter
colour	anthracite	RAL 9005 <sup>(1)</sup>
length	905 mm ± 1.5 %	
width	650 mm ± 1.5 %	
thickness	13 mm ± 1.5 %	
mat weight	2.79 kg <sup>(2)</sup>	
surface weight	4.74 kg/m <sup>2</sup> <sup>(2)</sup>	
hardness	23 ± 5 Shore A	
packaging unit	80 pieces	
temperature resistance	-40 to +80 °C	
chemical resistance	good	Please ask for our detailed resistance list
UV resistance	discolouration may occur but won't influence the quality and performance of the material	
electrical resistivity	< 10 <sup>8</sup> Ω	EN 61340-4-1 (2016)
trafficability	not suitable for vehicle traffic	
fire behaviour	B2	DIN 4102-2, normal flammability

<sup>(1)</sup> Colour of the material may slightly differ from the colour specification

<sup>(2)</sup> Due to usual manufacturing tolerances there may be minor deviations from the values given.

All information and data is based on our current knowledge. The data are subject to typical manufacturing tolerances and are not guaranteed. We reserve the right to amend the data.



## dynamicSTEP ESD

Ergonomic workplace mat  
for ESD areas

The **dynamicSTEP** floor mat system made of permanently elastic PUR integral foam reduces the pressure exerted by hard flooring and provides safety in the workplace, during sport and leisure time as a non-slip floor covering.

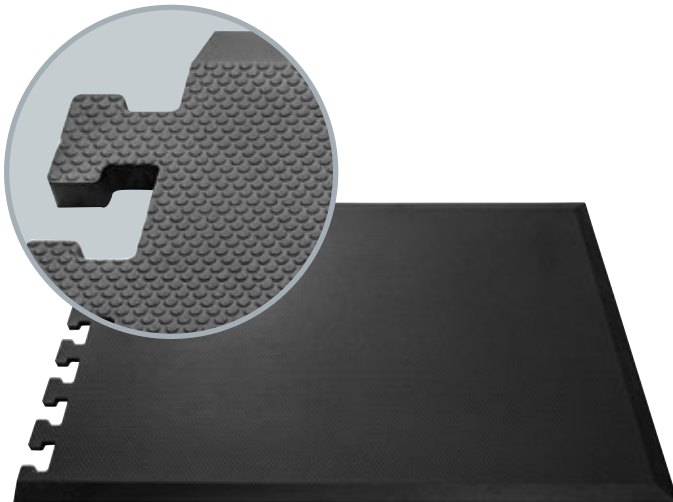
The floor covering has an insulating, shock-absorbing and sound-insulating effect. The highly resistant material also allows use in production and warehouse areas where people stand or walk.

properties	value	comment
material	polyurethane	Dipointegral EL
surface/design	flat pastille	bevelled edging along the entire perimeter
colour	anthracite	RAL 9005 <sup>(1)</sup>
length	1210 mm ± 1.5 %	
width	650 mm ± 1.5 %	
thickness	13 mm ± 1.5 %	
mat weight	3.73 kg <sup>(2)</sup>	
surface weight	4.74 kg/m <sup>2</sup> <sup>(2)</sup>	
hardness	23 ± 5 Shore A	
packaging unit	80 pieces	
temperature resistance	-40 to +80 °C	
chemical resistance	good	Please ask for our detailed resistance list
UV resistance	discolouration may occur but won't influence the quality and performance of the material	
electrical resistivity	< 10 <sup>8</sup> Ω	EN 61340-4-1 (2016)
trafficability	not suitable for vehicle traffic	
fire behaviour	B2	DIN 4102-2, normal flammability

<sup>(1)</sup> Colour of the material may slightly differ from the colour specification

<sup>(2)</sup> Due to usual manufacturing tolerances there may be minor deviations from the values given.

All information and data is based on our current knowledge. The data are subject to typical manufacturing tolerances and are not guaranteed. We reserve the right to amend the data.



## dynamicSTEP ESD

Ergonomic workplace mat  
for ESD areas

The **dynamicSTEP** floor mat system made of permanently elastic PUR integral foam reduces the pressure exerted by hard flooring and provides safety in the workplace, during sport and leisure time as a non-slip floor covering.

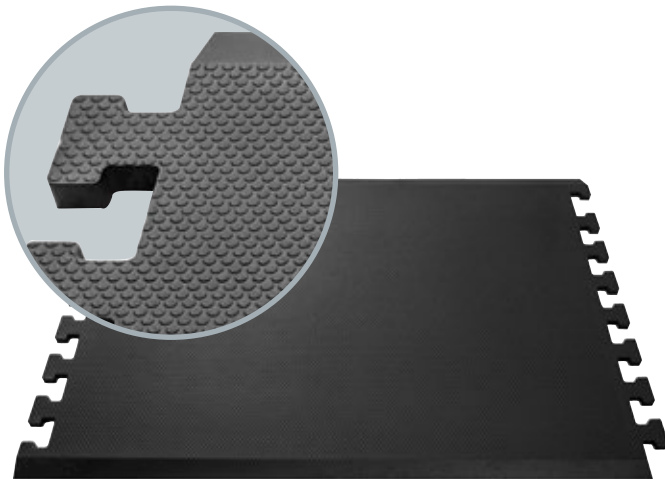
The floor covering has an insulating, shock-absorbing and sound-insulating effect. The highly resistant material also allows use in production and warehouse areas where people stand or walk.

properties	value	comment
material	polyurethane	Dipointegral EL
surface/design	flat pastille	single-sided toothing, bevelled at un-toothed edges
colour	anthracite	RAL 9005 <sup>(1)</sup>
length	905 mm ± 1.5 %	
width	650 mm ± 1.5 %	
thickness	13 mm ± 1.5 %	
mat weight	2.79 kg <sup>(2)</sup>	
surface weight	4.74 kg/m <sup>2</sup> <sup>(2)</sup>	
hardness	23 ± 5 Shore A	
packaging unit	80 pieces	
temperature resistance	-40 to +80 °C	
chemical resistance	good	Please ask for our detailed resistance list
UV resistance	discolouration may occur but won't influence the quality and performance of the material	
electrical resistivity	< 10 <sup>8</sup> Ω	EN 61340-4-1 (2016)
trafficability	not suitable for vehicle traffic	
fire behaviour	B2	DIN 4102-2, normal flammability

<sup>(1)</sup> Colour of the material may slightly differ from the colour specification

<sup>(2)</sup> Due to usual manufacturing tolerances there may be minor deviations from the values given.

All information and data is based on our current knowledge. The data are subject to typical manufacturing tolerances and are not guaranteed. We reserve the right to amend the data.



## dynamicSTEP ESD

Ergonomic workplace mat  
for ESD areas

The **dynamicSTEP** floor mat system made of permanently elastic PUR integral foam reduces the pressure exerted by hard flooring and provides safety in the workplace, during sport and leisure time as a non-slip floor covering.

The floor covering has an insulating, shock-absorbing and sound-insulating effect. The highly resistant material also allows use in production and warehouse areas where people stand or walk.

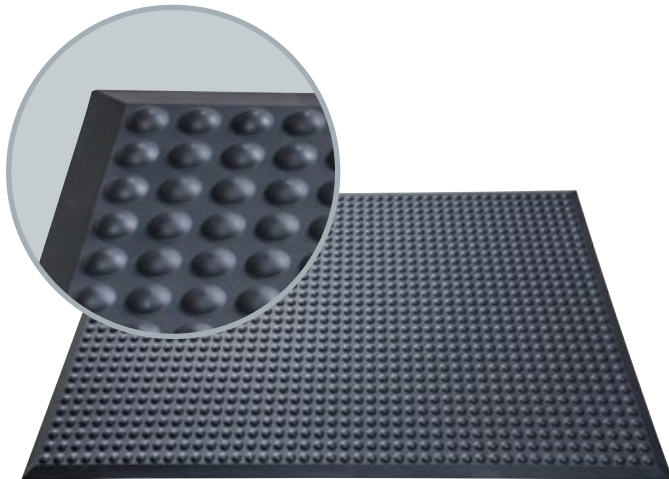
properties	value	comment
material	polyurethane	Dipointegral EL
surface/design	flat pastille	double-sided tothing, bevelled at un-toothed edges
colour	anthracite	RAL 9005 <sup>(1)</sup>
length	905 mm ± 1.5 %	
width	650 mm ± 1.5 %	
thickness	13 mm ± 1.5 %	
mat weight	2.79 kg <sup>(2)</sup>	
surface weight	4.74 kg/m <sup>2</sup> <sup>(2)</sup>	
hardness	23 ± 5 Shore A	
packaging unit	80 pieces	
temperature resistance	-40 to +80 °C	
chemical resistance	good	Please ask for our detailed resistance list
UV resistance	discolouration may occur but won't influence the quality and performance of the material	
electrical resistivity	< 10 <sup>8</sup> Ω	EN 61340-4-1 (2016)
trafficability	not suitable for vehicle traffic	
fire behaviour	B2	DIN 4102-2, normal flammability

<sup>(1)</sup> Colour of the material may slightly differ from the colour specification

<sup>(2)</sup> Due to usual manufacturing tolerances there may be minor deviations from the values given.

All information and data is based on our current knowledge. The data are subject to typical manufacturing tolerances and are not guaranteed. We reserve the right to amend the data.





## dynamicSTEP

### Ergonomic work place mat

The **dynamicSTEP** floor mat system made of permanently elastic PUR integral foam reduces the pressure exerted by hard flooring and provides safety in the workplace, during sport and leisure time as a non-slip floor covering.

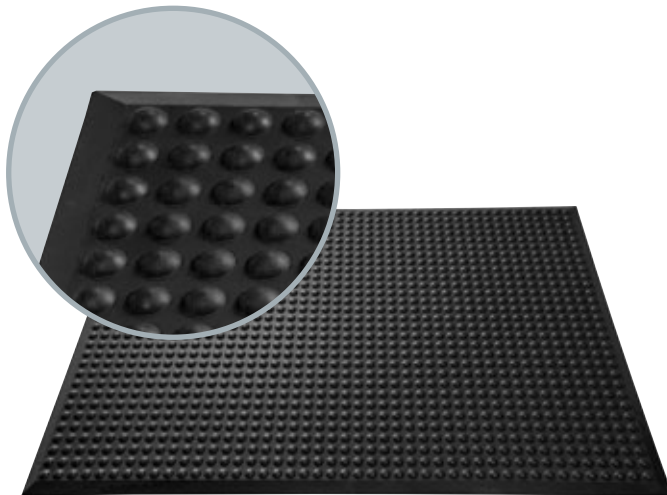
The floor covering has an insulating, shock-absorbing and sound-insulating effect. The highly resistant material also allows use in production and warehouse areas where people stand or walk.

properties	value	comment
material	polyurethane	Dipointegral EL
surface/design	round pastille	bevelled edging along the entire perimeter
colour	anthracite	RAL 7016 <sup>(1)</sup>
length	940 mm ± 1.5 %	
width	640 mm ± 1.5 %	
thickness	14 mm ± 1.5 %	
mat weight	2.85 kg <sup>(2)</sup>	
surface weight	4.74 kg/m <sup>2</sup> <sup>(2)</sup>	
hardness	28 ± 5 Shore A	
packaging unit	80 pieces	
temperature resistance	-40 to +80 °C	
chemical resistance	good	Please ask for our detailed resistance list
UV resistance	discolouration may occur but won't influence the quality and performance of the material	
trafficability	not suitable for vehicle traffic	
fire behaviour	B2	DIN 4102-2, normal flammability

<sup>(1)</sup> Colour of the material may slightly differ from the colour specification

<sup>(2)</sup> Due to usual manufacturing tolerances there may be minor deviations from the values given.

All information and data is based on our current knowledge. The data are subject to typical manufacturing tolerances and are not guaranteed. We reserve the right to amend the data.



## dynamicSTEP ESD

Ergonomic workplace mat  
for ESD areas

The **dynamicSTEP** floor mat system made of permanently elastic PUR integral foam reduces the pressure exerted by hard flooring and provides safety in the workplace, during sport and leisure time as a non-slip floor covering.

The floor covering has an insulating, shock-absorbing and sound-insulating effect. The highly resistant material also allows use in production and warehouse areas where people stand or walk.

properties	value	comment
material	polyurethane	Dipointegral EL
surface/design	round pastille	bevelled edging along the entire perimeter
colour	anthracite	RAL 9005 <sup>(1)</sup>
length	940 mm ± 1.5 %	
width	640 mm ± 1.5 %	
thickness	14 mm ± 1.5 %	
mat weight	2.85 kg <sup>(2)</sup>	
surface weight	4.74 kg/m <sup>2</sup> <sup>(2)</sup>	
hardness	23 ± 5 Shore A	
packaging unit	80 pieces	
temperature resistance	-40 to +80 °C	
chemical resistance	good	Please ask for our detailed resistance list
UV resistance	discolouration may occur but won't influence the quality and performance of the material	
electrical resistivity	< 10 <sup>8</sup> Ω	EN 61340-4-1 (2016)
trafficability	not suitable for vehicle traffic	
fire behaviour	B2	DIN 4102-2, normal flammability

<sup>(1)</sup> Colour of the material may slightly differ from the colour specification

<sup>(2)</sup> Due to usual manufacturing tolerances there may be minor deviations from the values given.

All information and data is based on our current knowledge. The data are subject to typical manufacturing tolerances and are not guaranteed. We reserve the right to amend the data.